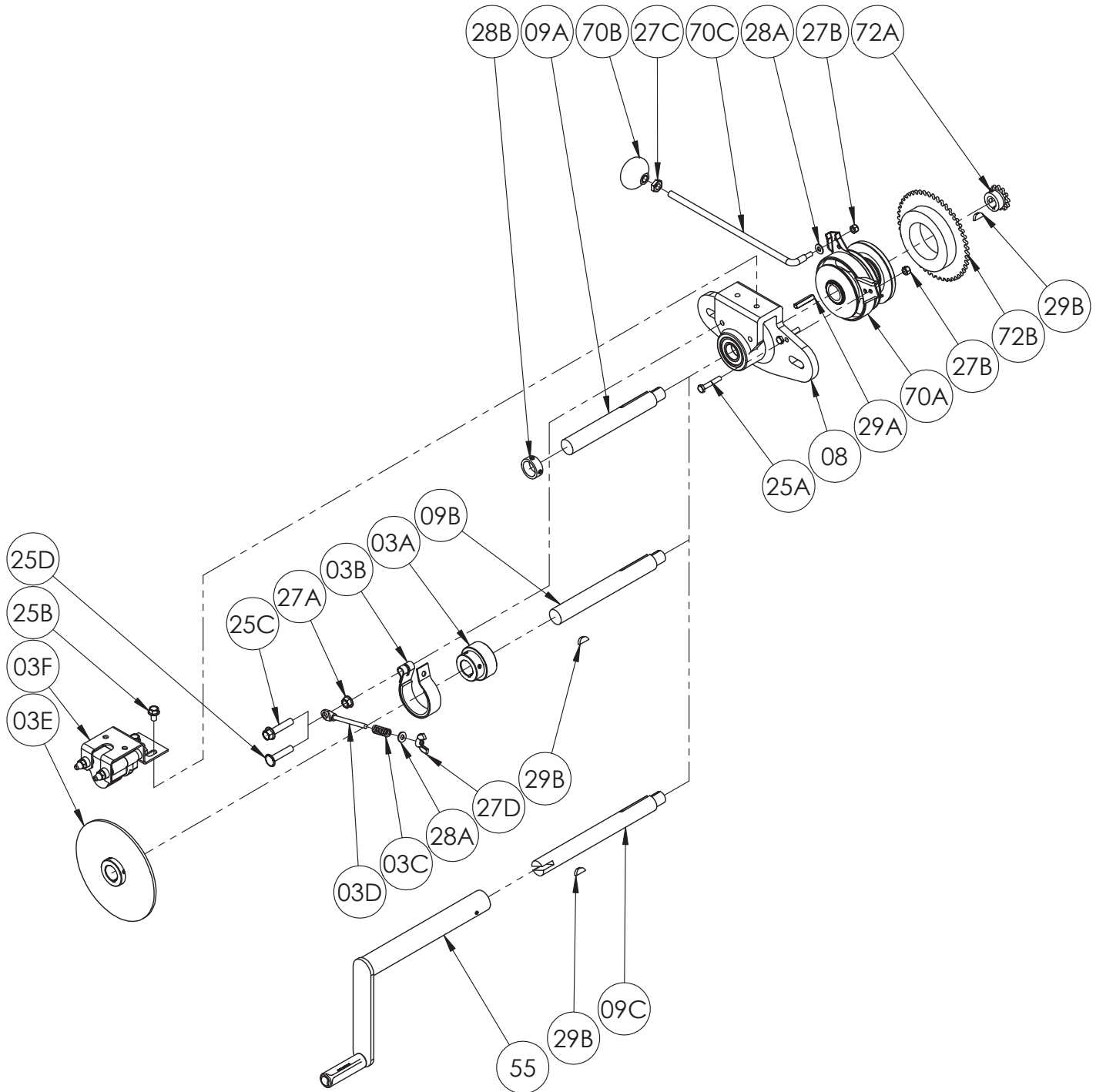


**Clutch/Reduction Unit
Assembly**



PARTS LIST
ISO 160
Clutch/Reduction Unit Assembly

When Ordering Parts
BE SURE TO SPECIFY COMPLETE MODEL NUMBER and SERIAL NUMBER OF REEL
USE PART NUMBER!

<u>Item No.</u>	<u>Description</u>	<u>Part No.</u>	<u>Quantity</u>
08	Reduction Unit Housing -- (w/ Bearings) (Specify Model)	9948.0015	1
09A	Reduction/Clutch Unit Shaft (Standard)	9948.0023	1
09B	Reduction/Clutch Unit Shaft (Air or Comet Brake, or Both).....	9948.0022	1
09C	Reduction/Clutch Unit Shaft (Air/Comet Brake & Auxillary Rewind).....	9948.0019	1
03A	Comet Brake Hub for 1" bore	9947.0042	1
03B	Comet Brake Strap.....	9947.0091	1
03C	SST Comet Brake Tension Adjustment Spring	9947.0096	1
03D	1/4"-20 Comet Brake Tension Adjustment Rod (3-1/2" Long)	9947.0094	1
03D	1/4"-20 Comet Brake Tension Adjustment Rod (4-3/4" Long)	9947.0104	1
03E	Brake Disc	9947.0150	1
03F	Standard Air Caliper Brake (P-38).....	9947.0020	1
25A	1/4"-20 x 1-1/2" Long Hex Head Bolt.....	9904.1004	2
25B	5/16"-18 x 1/2" Spinlock Bolt	9904.2158	2
25C	3/8"-16 x 1.75" Spinlock Bolt	9904.2205	1
25D	3/8"-16 x 1.75" Spinlock Bolt (Ground Down to Clear Disc Brake).....	9947.0151	1
27A	3/8"-16 Spinlock Nut	9904.6200	1
27B	1/4"-20 Nylon Lock Nut.....	9958.0015	3
27C	3/8"-16 Jam Nut.....	9965.0012	1
27D	1/4"-20 Comet Brake Wing Nut	9947.0095	1
28A	1/4" Flat Washer	9954.0005	3
28B	Collar -- (w/ Set Screws).....	9914.0351	2
29A	1/4" x 1-1/2" Square Key	9948.0301	1
29B	#9 Woodruff Key	9916.0080	1 or 2
55	H-18 Crank Handle Complete (See ISO-214 for Parts).....	9914.0011	1
70A	4" Form Sprag Clutch	9948.0024	1
70B	Clutch Lever Knob.....	9948.0060	1
70C	Clutch Activating Rod, per P08-00150 (Specify Model).....	9948.0061	1
72A	12T35 Sprocket -- (3/4" Bore) (3/4" Long).....	9948.0026	1
72A	12T35 Sprocket -- (3/4" Bore) (1" Long).....	9948.0029	1
72A	12T40 Sprocket -- (3/4" Bore)	9948.0027	1
72B	40T35 Sprocket, per P72A-00020	9948.0048	1
72B	48T35 Sprocket, per P72A-00030 (not shown)	9948.0043	1
72B	60T35 Sprocket, per P72A-00040 (not shown)	9948.0045	1